

# Theta functions

Theta functions  
03.03.2014

①

Let

$$G_1 = \{z \in \mathbb{C} \mid \operatorname{Im} z > 0\}$$

Define the Jacobi Theta function

$$\theta(z, q) = \sum_{n \in \mathbb{Z}} (-1)^n q^{n^2} e^{2\pi i n z}, \quad \text{where } q = e^{i\pi \tau}$$

(see [AAR, (10.7.4)].)

Fix  $z \in G_1$ , and let

$$\theta_4(z) = \theta(z, q) = (q^2; q^2)_\infty (q e^{2iz}; q^2)_\infty (q e^{-2iz}; q^2)_\infty \quad \left( \begin{array}{l} \text{Jacobi's} \\ \text{triple product} \\ \text{formula} \\ \text{[AAR (10.7.7)]} \end{array} \right)$$

$$\theta_1(z) = \frac{1}{i} q^{\frac{1}{4}} e^{i\pi z} \theta\left(z + \frac{\tau}{2}, q\right)$$

$$\theta_2(z) = q^{\frac{1}{4}} e^{i\pi z} \theta\left(z + \frac{\tau}{2} + \frac{1}{2}, q\right)$$

$$\theta_3(z) = \theta\left(z + \frac{\tau}{2}, q\right).$$

Let

$$k = \frac{\theta_2(0)^2}{\theta_3(0)^2} \quad \text{and} \quad k' = \frac{\theta_4(0)^2}{\theta_3(0)^2}$$

and

$$\operatorname{sn}(u) = \frac{\theta_3(0)}{\theta_2(0)} \frac{\theta_1\left(\frac{u}{\pi \theta_3(0)^2}\right)}{\theta_4\left(\frac{u}{\pi \theta_3(0)^2}\right)} \quad \operatorname{cn}(u) = \sqrt{\frac{k'}{k}} \frac{\theta_2(v)}{\theta_4(v)}$$

$$\operatorname{dn}(u) = \sqrt{k} \frac{\theta_3(v)}{\theta_4(v)} \quad \text{with} \quad v = \frac{u}{\pi \theta_3(0)^2}$$

Theta functions  
03.03.2014

(2)

Relation between  $\wp(z, w_1, w_2)$  and  $\Theta(z)$ .

~~Let~~ This is in Whittaker-Watson §21.73.

Let  $e_1, e_2, e_3$  be the roots of  $4y^3 - g_2y - g_3 = 0$ .

Let  $\tau$  be determined by  $\frac{e_1 - e_2}{e_1 - e_3} = \frac{\Theta_4(0, \tau)^4}{\Theta_3(0, \tau)^4}$ .

$$A^2 \Theta(\frac{z}{A})^4 = e_1 - e_2.$$

Then

$$\wp(z | w_1, w_2) = A^2 \frac{\Theta_2(Az, \tau)^2}{\Theta_1(Az, \tau)^2} \Theta_3(0, \tau) \Theta_4(0, \tau) + e_1.$$

Relation between  $\wp(z, w_1, w_2)$  and  $\operatorname{sn} u, \operatorname{cn} u, \operatorname{dn} u$ .

This is in Whittaker-Watson §22.351.

$$\wp(u; g_2, g_3) = e_3 + (e_1 - e_3) \frac{1}{\operatorname{sn}(u\sqrt{e_1 - e_3})^2}$$

where

$$k^2 = \frac{e_2 - e_3}{e_1 - e_3}$$

Addition formulas for theta functions

$$\begin{aligned} \theta_1(u) \theta_1(v) \theta_1(w) \theta_1(u+v+w) + \theta_4(u) \theta_4(v) \theta_4(w) \theta_4(u+v+w) \\ = \theta_4(0) \theta_4(u+v) \theta_4(u+w) \theta_4(v+w) \end{aligned}$$

$$\begin{aligned} \theta_1(u) \theta_1(v) \theta_1(w) \theta_4(u+v+w) + \theta_4(u) \theta_4(v) \theta_1(w) \theta_1(u+v+w) \\ = \theta_4(0) \theta_4(u+v) \theta_1(u+w) \theta_1(v+w). \end{aligned}$$

$$\theta_4(u-v) \theta_1(u+v) - \theta_4(u+v) \theta_1(u-v) = \frac{2 \theta_1(v) \theta_2(u) \theta_3(u) \theta_4(v)}{\theta_2(0) \theta_3(0)}$$

## References

E.T. Whittaker and G.N. Watson, *A Course of Modern Analysis*, Fourth edition, Cambridge University Press 1927.

J. H. Silverman, *The arithmetic of elliptic curves*, Graduate Texts in Mathematics 106, Springer-Verlag, 1986.

J. H. Silverman, *Advanced topics in the arithmetic of elliptic curves*, Graduate Texts in Mathematics 151, Springer-Verlag, 1994.

W. Schwalm, *Elliptic Functions  $sn$ ,  $cn$ ,  $dn$  as Trigonometry*, document without date, downloaded from web

L.A. Takhtadzhian and L.D. Faddeev, *The quantum method of the inverse problem and the Heisenberg XYZ model*, *Uspekhi Mat. Nauk.* 34:5 (1979) 13-63, *Russian Math. Surveys* 34:5 (1979), 11-68.

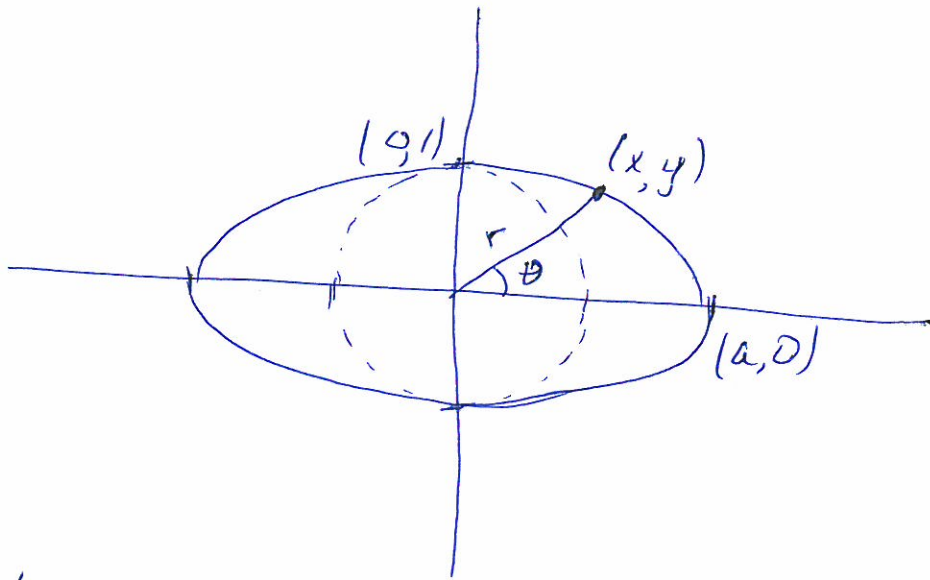
G.E. Andrews, R. Askey and R. Roy, *Special functions*, *Encyclopedia of Mathematics and its Applications* 71, Cambridge University Press 1999.

Additional References

- J. Igusa, Theta functions, Grundlehren 194, Springer-Verlag 1972.
- Y. Shimizu and K. Ueno, Advances in Moduli Theory, Translations of Mathematical Monographs Vol. 206, American Math. Soc 2002.
- V. Kaz and D. Peterson, Infinite dimensional Lie algebras, Theta functions and modular forms, Advances in Math. 53 (1984) 125-264
- G. Harder, Lectures on Algebraic Geometry I, Vieweg+Teubner, ~~2011~~. 2<sup>nd</sup> edition 2011.

# sn, cn, dn

## Elliptic Functions sn, cn, dn as Trigonometry ①



$$u = \int_0^{\theta} r d\theta, \quad k = \sqrt{1 - \frac{1}{a^2}}, \quad k' = \sqrt{\frac{1}{a^2}}$$

$$\operatorname{sn}(u) = y, \quad \operatorname{cn}(u) = \frac{x}{a}, \quad \operatorname{dn}(u) = \frac{r}{a}$$

The ordinary trig functions are obtained in the limit  $k \rightarrow 0$ , i.e.  $a \rightarrow 1$ .

Assume  $a \in \mathbb{R}_{\geq 1}$ , so that  $k \in [0, 1]$ .

Fact 1  $\operatorname{cn}^2 u + \operatorname{sn}^2 u = 1$

Proof  $\left(\frac{x}{a}\right)^2 + y^2 = 1$ , is the equation of the ellipse. //

Fact 2  $\operatorname{dn}^2 u + k^2 \operatorname{sn}^2 u = 1$ .

Proof  $\left(\frac{r}{a}\right)^2 + k^2 y^2 = \frac{y^2 + x^2}{a^2} + k^2 y^2 = \frac{y^2}{a^2} + \frac{x^2}{a^2} + \left(1 - \frac{1}{a^2}\right) y^2$   
 $= \left(\frac{x}{a}\right)^2 + y^2 = 1$ . //

Fact 3:  $\frac{d}{du} \operatorname{sn} u = \operatorname{cn} u \operatorname{dn} u$

Proof  $d\theta = \frac{1}{r^2} (x dy - y dx),$

since  $\theta = \tan^{-1}(\frac{y}{x})$  so that  $d\theta = \frac{1}{1 + \frac{y^2}{x^2}} (\frac{1}{x} dy - \frac{y}{x^2} dx).$

By definition of  $u,$

$$du = r d\theta = \frac{1}{r} (x dy - y dx)$$

Since  $(\frac{x}{a})^2 + y^2 = 1$  then  $\frac{x}{a^2} dx + y dy = 0.$

So  $du = \frac{1}{r} (\frac{-x^2}{a^2 y} - y) dx$  and

$$du = \frac{1}{r} (x + \frac{a^2 y^2}{x}) dy = \frac{a^2}{rx} dy$$

So  $d(\operatorname{sn}) = dy = \frac{r}{a} \cdot \frac{a}{x} dy = \operatorname{cn}(u) \operatorname{dn}(u) du.$  and

$$d(\operatorname{cn}) = \frac{1}{a} dx = \frac{1}{a} r \left( \frac{a^2 y}{-x^2 - a^2 y^2} \right) du = \frac{r}{a} \frac{y}{(-1)} du = -\operatorname{sn}(u) \operatorname{dn}(u) du$$

Fact 4:  $y = \operatorname{sn} u$  satisfies  $\left(\frac{dy}{du}\right)^2 = (1-y^2)(1-k^2 y^2).$

Proof  $\frac{d}{du} \operatorname{sn} u = \operatorname{cn} u \operatorname{dn} u = \sqrt{1-\operatorname{sn}^2 u} \sqrt{1-k^2 \operatorname{sn}^2 u} //$

Fact 5  $u = c + \int \frac{dy}{\sqrt{1-y^2} \sqrt{1-k^2 y^2}}$

Proof  $du = \frac{dy}{\sqrt{1-y^2} \sqrt{1-k^2 y^2}} //$

$sn, cn, dn,$

(3)

Fact 6:  $y = snu$  satisfies  $y'' + (1+k^2)y - 2k^2y^3 = 0$ .

Proof  $\frac{d}{du}$  applied to  $(\frac{dy}{du})^2 = (1-y^2)(1-k^2y^2)$  is

$$2 \frac{d^2y}{du^2} \frac{dy}{du} = (1-y^2) \left( -k^2 2y \frac{dy}{du} \right) - 2y \frac{dy}{du} (1-k^2y^2)$$

$$\begin{aligned} \text{So } 2y''y &= -k^2 2yy' + 2k^2y^3y' - 2yy' + 2k^2y^3y' \\ &= 2y'(-k^2y + k^2y^3 - y + k^2y^3) \end{aligned}$$

$$\text{So } y'' = -(1+k^2)y + 2k^2y^3.$$



## Trig and elliptic trig identities

My 5 favourite trig identities are

$$(1) e^{ix} = \cos x + i \sin x$$

$$(2) \cos(-x) = \cos x \text{ and } \sin(-x) = -\sin x$$

$$(3) \cos^2 x + \sin^2 x = 1$$

$$(4) \begin{aligned} \cos(x+y) &= \cos x \cos y - \sin x \sin y \\ \sin(x+y) &= \sin x \cos y + \cos x \sin y \end{aligned}$$

$$(5) \cos x = 1 - \frac{x^2}{2!} + \frac{x^4}{4!} - \frac{x^6}{6!} + \dots$$

$$\sin x = x - \frac{x^3}{3!} + \frac{x^5}{5!} - \frac{x^7}{7!} + \dots$$

The elliptic analogues are:

$$(2) \begin{aligned} \operatorname{cn}(-u) &= \operatorname{cn} u, & \operatorname{sn}(-u) &= -\operatorname{sn} u, & \operatorname{dn}(-u) &= \operatorname{dn} u \\ \operatorname{cn}(2K-u) &= -\operatorname{cn} u, & \operatorname{sn}(2K-u) &= \operatorname{sn} u, & \operatorname{dn}(2K-u) &= \operatorname{dn} u \\ \operatorname{cn}(2iK'-u) &= -\operatorname{cn} u, & \operatorname{sn}(2iK'-u) &= -\operatorname{sn} u, & \operatorname{dn}(2iK'-u) &= -\operatorname{dn} u \end{aligned}$$

where

$$K = \int_0^{\pi/2} \frac{d\varphi}{\sqrt{1-k^2 \sin^2 \varphi}}$$

$$= \frac{1}{2} \pi \theta_3(0)^2$$

$$\text{and } K' = \int_0^{\pi/2} \frac{d\varphi}{\sqrt{1-(k')^2 \sin^2 \varphi}}$$

$$= -\frac{i\pi\tau}{2} \theta_3(0)^2$$

$$(3) \quad \text{cn}^2 u + \text{sn}^2 u = 1 \quad \text{and} \quad \text{dn}^2 u + k^2 \text{sn}^2 u = 1.$$

$$(4) \quad \text{cn}(u+v) = \frac{\text{cn} u \text{cn} v - \text{sn} u \text{dn} u \text{sn} v \text{dn} v}{1 - k^2 \text{sn}^2 u \text{sn}^2 v}$$

$$\text{dn}(u+v) = \frac{\text{dn} u \text{dn} v - k^2 \text{sn} u \text{cn} u \text{sn} v \text{cn} v}{1 - k^2 \text{sn}^2 u \text{sn}^2 v}$$

$$\text{sn}(u+v) = \frac{\text{sn} u \text{cn} v \text{dn} v + \text{cn} v \text{dn} u \text{sn} v}{1 - k^2 \text{sn}^2 u \text{sn}^2 v}.$$

## Derivatives of the trig and elliptic trig functions

The favourite derivatives

$$\frac{d}{dx} \cos x = -\sin x \quad \text{and} \quad \frac{d}{dx} \sin x = \cos x$$

generalize to

$$\frac{d}{du} \text{cn} u = -\text{sn} u \text{dn} u,$$

$$\frac{d}{du} \text{dn} u = -k^2 \text{sn} u \text{cn} u$$

$$\frac{d}{du} \text{sn} u = \text{cn} u \text{dn} u.$$

## Relations between hyperbolic functions and trig functions

$$\sinh x = -i \sin(ix) \quad \text{and} \quad \cosh x = \cos(ix)$$

~~$$\cosh x = \cos(ix)$$~~

# Elliptic Functions

①

## Theorem

$$(a) \operatorname{sn}^2(u) + \operatorname{cn}^2(u) = 1$$

$$(b) k^2 \operatorname{sn}^2(u) + \operatorname{dn}^2(u) = 1$$

$$(c) \frac{d}{du} \operatorname{sn}(u) = \operatorname{cn}(u) \operatorname{dn}(u)$$

$$\frac{d}{du} \operatorname{cn}(u) = -\operatorname{sn}(u) \operatorname{dn}(u)$$

$$\frac{d}{du} \operatorname{dn}(u) = -k^2 \operatorname{sn}(u) \operatorname{cn}(u).$$

$$(d) \text{ If } y = \operatorname{sn}(u) \text{ then } \left(\frac{dy}{du}\right)^2 = (1-y^2)(1-k^2y^2).$$

$$(e) \operatorname{sn}(-u) = -\operatorname{sn}(u)$$

$$\operatorname{cn}(-u) = \operatorname{cn}(u)$$

$$\operatorname{dn}(-u) = \operatorname{dn}(u)$$

$$(f) \operatorname{sn}(2K-u) = \operatorname{sn}(u),$$

$$\operatorname{cn}(2K-u) = -\operatorname{cn}(u)$$

$$\operatorname{dn}(2K-u) = \operatorname{dn}(u)$$

$$\text{where } K = \frac{1}{2}\pi \Theta_3^2(0) = \int_0^{\pi/2} \frac{d\varphi}{\sqrt{1-k^2 \sin^2 \varphi}}$$

$$(g) \operatorname{sn}(2iK'-u) = -\operatorname{sn}(u),$$

$$\operatorname{cn}(2iK'-u) = -\operatorname{cn}(u),$$

$$\operatorname{dn}(2iK'-u) = -\operatorname{dn}(u),$$

$$\text{where } K' = \frac{i\pi}{2} \Theta_3^2(0) = \int_0^{\pi/2} \frac{d\varphi}{\sqrt{1-k'^2 \sin^2 \varphi}}$$

## Definitions of sn(u), cn(u), dn(u)

(2)

$$\operatorname{sn}(u, k) = \frac{1}{\sqrt{k}} \frac{\theta_1\left(\frac{u}{2K_k}\right)}{\theta_4\left(\frac{u}{2K_k}\right)}$$

$$\operatorname{cn}(u, k) = \sqrt{\frac{k'}{k}} \frac{\theta_2\left(\frac{u}{2K_k}\right)}{\theta_4\left(\frac{u}{2K_k}\right)}$$

$$\operatorname{dn}(u, k) = \sqrt{k'} \frac{\theta_3\left(\frac{u}{2K_k}\right)}{\theta_4\left(\frac{u}{2K_k}\right)}$$

with

$$K_k = \frac{1}{2}\pi \theta_3^2(0) \quad \text{and} \quad K_k' = -\frac{i\pi c}{2} \theta_3^2(0)$$

$$k = \frac{\theta_2^2(0)}{\theta_3^2(0)} \quad \text{and} \quad k' = \frac{\theta_4^2(0)}{\theta_3^2(0)}$$

Here

$$z \in \mathbb{C}, \operatorname{Im}(z) > 0 \quad \text{and} \quad q = e^{i\pi z}$$

$$\theta(z) = \theta(z, q) = \sum_{n \in \mathbb{Z}} (-1)^n q^{n^2} e^{2\pi i n z}$$

and

$$\theta_4(z) = \theta(z),$$

$$\theta_3(z) = \theta\left(z + \frac{1}{2}\right)$$

$$\theta_2(z) = q^{\frac{1}{4}} e^{i\pi z} \theta\left(z + \frac{1}{2} + \frac{\tau}{2}\right)$$

$$\theta_1(z) = \frac{1}{i} q^{\frac{1}{4}} e^{i\pi z} \theta\left(z + \frac{\tau}{2}\right).$$

# Elliptic functions

## Theorem:

(a)  $sn^2 u + cn^2 u = 1$ . [Sc (7)] [TF, I. 15]

(b)  $k^2 sn^2 u + dn^2 u = 1$  [Sc (8)] [TF, I. 15]

(c)  $\frac{d}{du} snu = cnu \, dnu$  [Sc (9)] [TF I. 19]

(d)  $\frac{d}{du} cnu = -snu \, dnu$  [Sc (10)] [TF I. 19]

(e)  $\frac{d}{du} dnu = -k^2 snu \, cnu$  [Sc (11)] [TF I. 19]

(f) ~~sc~~ If  $y = snu$  then  $\left(\frac{dy}{du}\right)^2 = (1-y^2)(1-k^2 y^2)$  [Sc (12)] [TF, I. 13]

(g)  $sn(-u) = -snu$

$cn(-u) = cnu$

$dn(-u) = dnu$

(h)  $sn(2K-u) = snu$ ,

$cn(2K-u) = -cnu$ ,

$dn(2K-u) = dnu$ ,

where  $K = \frac{1}{2} \pi \Theta_3^2(D) = \int_0^{\pi/2} \frac{d\varphi}{\sqrt{1-k^2 \sin^2 \varphi}}$

(i)  $sn(2iK'-u) = -snu$ ,

$cn(2iK'-u) = cnu$ ,

$dn(2iK'-u) = -dnu$ ,

where  $K' = \frac{-i\pi}{2} \Theta_3^2(D) = \int_0^{\pi/2} \frac{d\varphi}{\sqrt{1-k'^2 \sin^2 \varphi}}$

# Theta functions

②

$z \in \mathbb{C}$ ,  $\text{Im}(z) > 0$  and

$$q = e^{i\pi z}$$

Let

$$\Theta(z) = \Theta(z, q) = \sum_{n \in \mathbb{Z}} (-1)^n q^{n^2} e^{2\pi i n z}$$

Then let

$$\Theta_4(z) = \Theta(z)$$

$$\Theta_3(z) = \Theta\left(z + \frac{1}{2}\right)$$

$$\Theta_2(z) = q^{\frac{1}{4}} e^{i\pi z} \Theta\left(z + \frac{1}{2} + \frac{i}{2}\right)$$

$$\Theta_1(z) = \frac{1}{i} q^{\frac{1}{4}} e^{i\pi z} \Theta\left(z + \frac{i}{2}\right)$$

and

$$k = \frac{\Theta_2^2(0)}{\Theta_3^2(0)} \quad \text{and} \quad k' = \frac{\Theta_4^2(0)}{\Theta_3^2(0)}$$

Theorem (a)  $k^2 + k'^2 = 1$ . [TF, I.9]

[TF, after I.12] (b) If  $k \neq 0, 1$  then  $\tau$  is uniquely determined by  $k$ .

Theorem (a)  $\Theta(z+1) = \Theta(z)$   
[TF, I.2] (b)  $\Theta(z+\tau) = -\frac{e^{-2\pi i z}}{q} \Theta(z)$

$$\text{[TF, I.6]} \quad (c) \quad \Theta_4(u-v) \Theta_1(u+v) - \Theta_4(u+v) \Theta_1(u-v) = \frac{2\Theta_1(v) \Theta_2(u) \Theta_3(u) \Theta_4(v)}{\Theta_2(0) \Theta_3(0)}$$

(d) [TF, I.4]

(e) [TF, I.5]

From Andrews, Askey, Roy.

(3)

$$\theta_1(z) = \sum_{n \in \mathbb{Z}} (-1)^n q^{\binom{n+1}{2}} e^{(2n+1)iz}$$

$$\theta_2(z) = \theta_1(z + \frac{i}{2})$$

$$\theta_3(z) = \sum_{n \in \mathbb{Z}} q^{n^2} e^{2inz}$$

and  $q = e^{i\pi\tau}$  with  $\text{Im}(\tau) > 0$

$$\theta_4(z) = \theta_3(z + \frac{i}{2})$$

so that  $|q| < 1$ .

$$= \sum_{n \in \mathbb{Z}} (-1)^n q^{n^2} e^{2inz}$$

They give product formulas:

$$\text{[AAR, (10.7.7)] } \theta_4(z) = (q^2; q^2)_\infty (qe^{2iz}; q^2)_\infty (qe^{-2iz}; q^2)_\infty$$

equivalent to the Jacobi triple product formula.

The rest of this treatment seems not so useful.

J. Silverman, Arithmetic of Elliptic Curves,  
GTM 106, Springer, 2009. 516.352 SILV

J. Silverman, Advanced topics in the arithmetic  
of Elliptic Curves, GTM 151, Springer 1994.  
516.352 SILV.

M. Hindry and J. Silverman, Diophantine Geometry  
an introduction, GTM 201, Springer 2000  
512.7 HIND